



DB1C

Wi-Fi Video Doorbell

Reliable protection at your doorstep.

Enjoy high-quality video chat with visitors and keep an eye on what's happening at your front door right through your phone. The DB1C is a powerful video doorbell with built-in artificial intelligence capability.

FHD

1080p



170° Vertical
Field of View



AI-Powered
Person Detection



2.4 GHz & 5 GHz
Dual Band Wi-Fi



Two-Way Talk



Night Vision
up to 5 m (16 ft.)

H.265

H.265 Video
Compression



IP65 Dust and
Water Protection

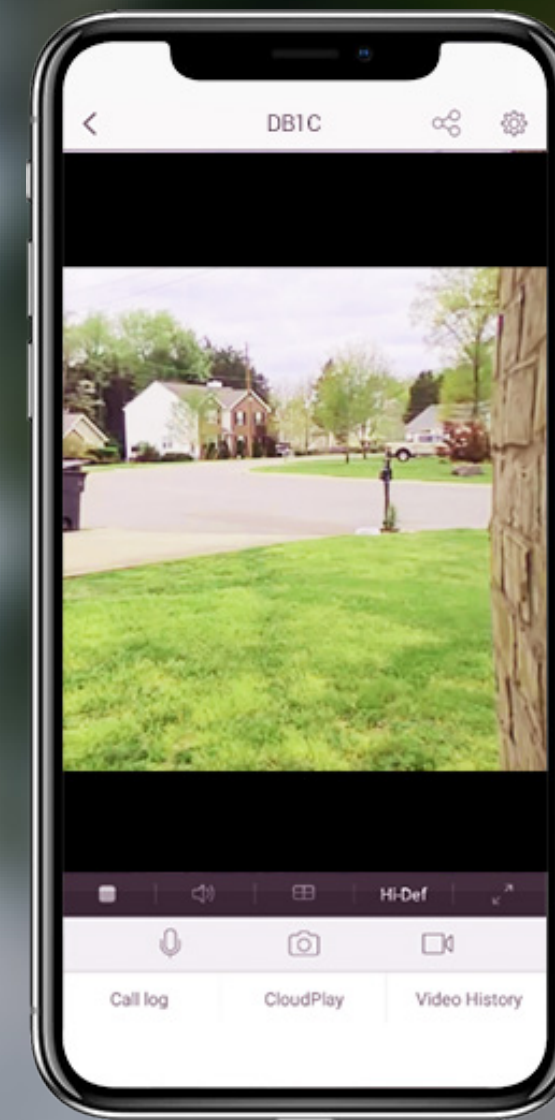


Supports MicroSD
Card up to 256 GB



See every detail you need to see.

The DB1C delivers 1080p video, bringing the rich precision and extraordinary images you would expect from EZVIZ.



Person-detection enabled.

With its AI algorithm onboard, the DB1C intelligently detects a person's movement, ensuring that you only receive notifications when people move by. You can turn off this function if you need other motion alerts such as those triggered by animals or cars.



Covers every inch, from head to toe.

Featuring a 170-degree vertical view, the DB1C reliably records everything you need to see. Even a package on the ground will be clearly captured.



Two-way talk.

When the EZVIZ App notifies you of a visitor at the front door, you can see and talk to the person right away, and from wherever you are.



Dual-band Wi-Fi connectivity.

Not all video doorbells support dual-band connectivity. The DB1C does, and it gives you the flexibility to choose between 2.4 or 5 GHz connections for optimal performance on your network.



Save money on storage and bandwidth.

The DB1C doorbell features the advanced H.265 video compression technology, achieving better video quality with only half the bandwidth and half the storage space of the older H.264 video compression standard.



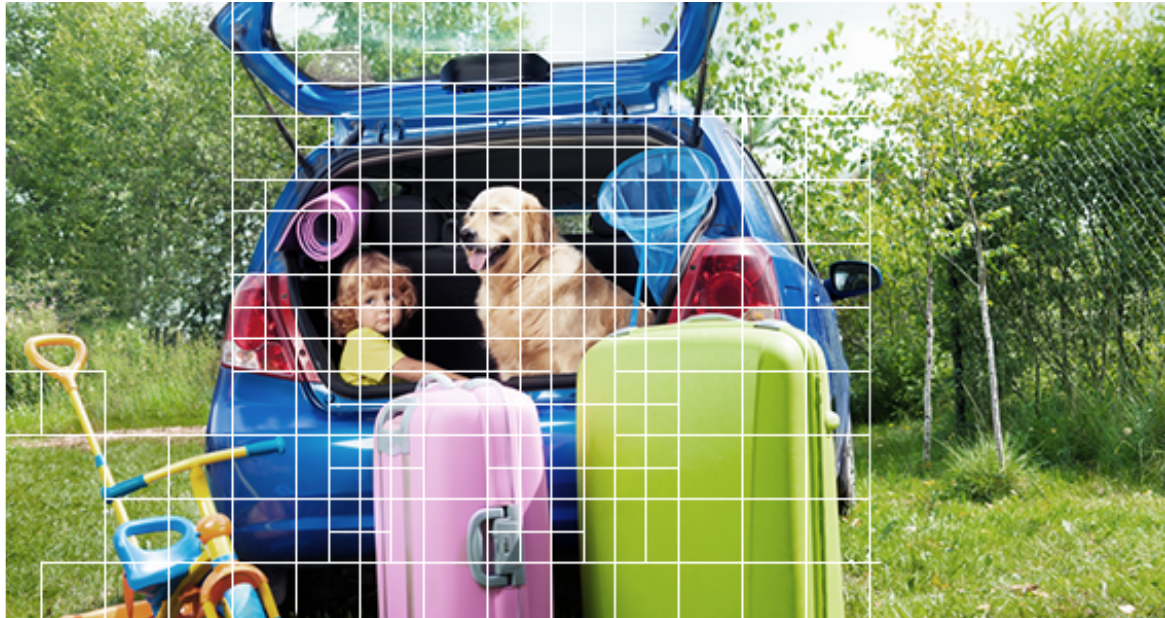
H.264 (Mainstream Video Compression)



Required Bandwidth



Required Storage Space



H.265 (Upgraded Video Compression)



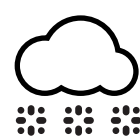
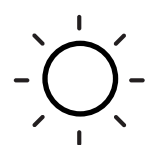
Required Bandwidth



Required Storage Space

Fearless in any weather.

Rated with IP65 protection, the DB1C doorbell works reliably in rain, sleet or snow, bringing you peace of mind throughout the year.



Specifications CS-DB1C-A1-1E2W2FR

Camera

Image Sensor	1/2.4" Progressive Scan CMOS
Lens	2.1 mm @ F2.4, view angle: 170° (Vertical)
Day & Night	IR-cut filter with auto-switching
Night Vision	Max. 5 m (16.4 ft.)

Video

Max. Resolution	1536 x 1536
DNR	3D DNR
WDR	Digital WDR
Video Compression	H.265 / H.264
Frame Rate	Max: 15fps; Self-adaptive during network transmission

Interface

Storage	H.264 / H.265
Audio Input	Ultra-HD; HD; Standard. Adaptive bit rate.
Audio Output	Built-in high-power speaker
Reset button	Yes

Network

Intelligent Alarm	Motion detection (with person-shape detection)
Video Intercom	Long-distance video two-way talk
Protocol	EZVIZ cloud proprietary protocol
Interface Protocol	EZVIZ cloud proprietary protocol

Wi-Fi

Wireless	IEEE802.11a/b/g/n, 2.4 and 5 GHz dual bands
Channel Bandwidth	Supports 20 MHz
Security	64 / 128-bit WEP, WPA / WPA2, WPA-PSK / WPA2-PSK

General

Working Temperature	-10°C to 45°C (14°F to 113°F)
Working Humidity	95% or less (non-condensing)
Power Supply	AC 12V to 24V (220 mAh backup battery)
IP Grade	IP65
Weight	102 g (0.22 lbs)
Dimensions	128.3 x 46.3 x 19.3 mm (5.05 x 1.82 x 0.76 inch)
Packaging Dimensions	172.5 x 102 x 97 mm (6.79 x 4.02 x 3.82 inch)

In the box:

- Doorbell
- Mounting Plate × 2
- Plate Foam
- Power Kit
- Drill Bit
- Screwdriver
- Mounting Screw × 3
- Anchor × 3
- Wire connecter × 4
- Security Screw
- Fixing Screw × 2
- Wire Harness
- Fuse Wire
- U-shaped Wire × 2
- Quick Start Guide

Certifications:

UL / FCC / CE / WEEE / REACH / RoHS

Specifications are subject to change without notice. "EZVIZ", "EZVIZ" and other EZVIZ's trademarks and logos are the properties of EZVIZ in various jurisdictions. Other brands and product names are trademarks or registered trademarks of their respective holders.

<https://www.ezvizlife.com/>